



IKA[®]

Product overview 08/09



Designed
to work perfectly

IMLAB
OUDE VIJVERS 1
3370 BOUTERSEM
BELGIUM

Tel.: +32 16 73 55 72
Fax: +32 16 73 55 87
E-Mail: info@imlab.be
www.imlab.be



Designed
to work perfectly

IKA® Mixing
 Magnetic stirrers with heating



IKA® Mixing
 Magnetic stirrers with heating



	RH basic 2 IKAMAG®	RH basic KT/C safety control IKAMAG®	RH digital KT/C safety control IKAMAG®
Technical data			
Stirring quantity (H ₂ O)	10 l	15 l	15 l
Motor rating input / output	15 / 2 W	15 / 2 W	15 / 2 W
Speed display	scale (0 - 6)	scale (0 - 6)	digital
Speed range	100 - 2.000 rpm	100 - 2.000 rpm	100 - 2.000 rpm
Max. magnetic bar (L x Ø)	40 x 8 mm	40 x 8 mm	40 x 8 mm
Heating function			
Heat output	400 W	500 W	500 W
Temperature range	RT - 320 °C	RT - 320 °C	RT - 320 °C
Setting accuracy	± 10 K	± 10 K	± 1 K
Adjustable safety circuit	-	100 - 400 °C	100 - 400 °C
Control accuracy with sensor	-	ETS-D5 ± 0,5 K ETS-D6 ± 0,2 K	ETS-D5 ± 0,5 K ETS-D6 ± 0,2 K
Heating plate			
Material	stainless steel (AISI 304)	stainless steel white coated	stainless steel white coated
Dimensions	Ø 125 mm	130 x 130 mm	130 x 130 mm
General data			
Dimensions (W x D x H)	168 x 220 x 105 mm	168 x 220 x 105 mm	168 x 220 x 105 mm
Weight	2,4 kg	2,4 kg	2,4 kg
Protection class acc. to DIN EN 60529	IP 21	IP 21	IP 21
Interface	-	-	-
Ident. No.	3339000	3207100	3207000

RCT basic safety control IKAMAG®	RET basic safety control IKAMAG®	RET control-visc C safety control IKAMAG®	RET control-visc safety control IKAMAG®
Technical data			
20 l	20 l	20 l	20 l
16 / 9 W	16 / 9 W	12 / 5 W	12 / 5 W
digital	digital	digital	digital
50 - 1.500 rpm	50 - 1.700 rpm	0 - 1.500 rpm	0 - 1.500 rpm
80 x 10 mm	80 x 10 mm	80 x 10 mm	80 x 10 mm
Heating function			
600 W	600 W	600 W	600 W
RT - 310 °C	RT - 340 °C	RT - 340 °C	RT - 340 °C
± 1 K	± 1 K	± 0,5 K	± 0,5 K
50 - 360 °C	50 - 360 °C	50 - 350 °C	50 - 350 °C
PT 1000 ± 1 K / ETS-D5 ± 0,5 K ETS-D6 ± 0,2 K	PT 1000 ± 1 K / ETS-D5 ± 0,5 K ETS-D6 ± 0,2 K	± 0,2 K	± 0,2 K
Heating plate			
aluminium alloy	stainless steel	stainless steel white coated	stainless steel
Ø 135 mm	Ø 135 mm	Ø 135 mm	Ø 135 mm
General data			
160 x 270 x 85 mm	160 x 270 x 95 mm	160 x 280 x 97 mm	160 x 280 x 97 mm
2,5 kg	2,5 kg	2,8 kg	2,8 kg
IP 42	IP 42	IP 42	IP 42
-	-	RS 232 / analog	RS 232 / analog
3810000	3622000	3364100	3364000

IKA® Mixing
 Magnetic stirrers without heating



	topolino / topolino mobil IKAMAG®	Mini MR standard IKAMAG®	lab disc IKAMAG®	COLOR SQUID IKAMAG®	BIG SQUID IKAMAG®
Technical data					
Stirring quantity (H ₂ O)	0,25 l	0,8 l	0,8 l	0,8 l	1,5 l
Motor rating input / output	1,1 / 0,8 W	4 / 0,5 W	5 / 3 W	2 / 1 W	2 / 1 W
Speed display	-	-	-	-	-
Speed range	300 – 1.800 rpm	0 – 1.500 rpm	15 – 1.500 rpm	0 – 1.500 rpm	0 – 1.500 rpm
Reversion of rotation direction (switchable)	-	-	every 30 s	-	-
Max. magnetic bar (L x Ø)	30 x 8 mm	30 x 8 mm	30 x 8 mm	30 x 8 mm	30 x 8 mm
Set-up plate					
Material	PP	polyester	polyester	glass	glass
Dimensions	Ø 80 mm	115 x 115 mm	Ø 90 mm	Ø 110 mm	Ø 160 mm
General data					
Dimensions (W x D x H)	95 x 115 x 40 / Ø 140 x 40 mm	115 x 130 x 40 mm	114 x 161 x 12 mm	130 x 135 x 50 mm	180 x 180 x 48 mm
Weight	0,3 / 0,32 kg	0,23 kg	0,3 kg	0,48 kg	1 kg
Protection class acc. to DIN EN60529	IP 21 / IP 20	IP 42	IP 65	IP 54	IP 54
Ident. No.	3368000 / 3381300	2677000	3277700	2669917	3050009

IKA® Mixing
 Magnetic stirrers without heating



KMO 2 basic IKAMAG®	REO basic IKAMAG®	Midi MR 1 digital IKAMAG®	Maxi MR 1 digital IKAMAG®
5 l	20 l	50 l	150 l
14 / 4 W	16 / 9 W	70 / 19 W	80 / 35 W
scale	digital	digital	digital
0 – 1.100 rpm	0 – 1.700 rpm	0 – 1.000 rpm	0 – 600 rpm
-	-	-	-
50 x 8 mm	80 x 10 mm	80 x 10 mm	155 x 27 mm
stainless steel (AISI 304)	stainless steel (AISI 304)	stainless steel (AISI 304)	stainless steel (AISI 304)
140 x 120 mm	Ø 135 mm	350 x 350 mm	500 x 500 mm
140 x 200 x 75 mm	160 x 270 x 80 mm	360 x 430 x 110 mm	505 x 585 x 110 mm
1,4 kg	2,4 kg	9 kg	16 kg
IP 21	IP 42	IP 21	IP 21
2812000	3384200	2621900	2621800

IKA® Mixing
 Electronic overhead stirrers

IKA® Mixing
 Electronic overhead stirrers



RW 11 basic off-white
 Further motifs see page 18



RW 14 basic



RW 16 basic



EUROSTAR digital



EUROSTAR power basic



EUROSTAR power control-visc



EUROSTAR power control-visc 6000



EUROSTAR power control-visc P1



EUROSTAR power control-visc P4 / P7

	RW 11 basic „Lab egg“	RW 14 basic	RW 16 basic	EUROSTAR digital
Technical data				
Stirring quantity (H ₂ O)	2 l	8 l	10 l	20 l
Max. viscosity	100 mPas	10.000 mPas	10.000 mPas	10.000 mPas
Motor rating input / output	8 / 1 W	28,5 / 17 W	75 / 55 W	75 / 55 W
Output at stirring shaft	1 W	17 W	53 W	53 W
Max. ON time	100 %	100 %	100 %	100 %
Max. torque at chuck	0,8 Ncm	8 Ncm	40 Ncm	30 Ncm
Speed range	0 – 2.000 rpm	100 – 2.000 rpm	40 – 1.200 rpm	50 – 2.000 rpm
Speed display	–	scale	scale (1 – 10)	digital
Chuck range	plug-in coupling 4 mm	0,5 – 8 mm	0,5 – 10 mm	0,5 – 10 mm
Diameter / length of extension arm	integrated	13 / 160 mm	13 / 160 mm	13 / 160 mm
General data				
Dimensions (W x D x H)	86 x 175 x 89 mm	70 x 176 x 197 mm	80 x 190 x 222 mm	80 x 190 x 222 mm
Weight	0,39 kg	2 kg	2,8 kg	2,8 kg
Protection class acc. to DIN EN 60529	IP 42	IP 20	IP 42	IP 42
Interface	–	–	–	–
Torque measurement	–	–	–	–
Ident. No.	2830001	3331400	2572100	2482000

	basic	EUROSTAR power control-visc	EUROSTAR power control-visc 6000	EUROSTAR power control-visc P1	EUROSTAR power control-visc P4	EUROSTAR power control-visc P7
	40 l	40 l	20 l	60 l	40 l	40 l
	50.000 mPas	50.000 mPas	10.000 mPas	70.000 mPas	100.000 mPas	150.000 mPas
	130 / 110 W	130 / 110 W	130 / 110 W	153 / 134 W	130 / 110 W	130 / 110 W
	105 W	105 W	95 W	126 W	95 W	95 W
	100 %	100 %	100 %	100 %	100 %	100 %
	60 Ncm	60 Ncm	15 Ncm	100 Ncm	200 Ncm	380 Ncm
	50 – 2.000 rpm	50 – 2.000 rpm	150 – 6.000 rpm	50 – 1.200 rpm	14 – 530 rpm	8 – 290 rpm
	scale	digital	digital	digital	digital	digital
	0,5 – 10 mm	0,5 – 10 mm	cone seat	0,5 – 10 mm	0,5 – 10 mm	0,5 – 10 mm
	16 / 200 mm	16 / 200 mm	16 / 220 mm	16 / 200 mm	16 / 200 mm	16 / 200 mm
	80 x 190 x 253 mm	80 x 190 x 253 mm	80 x 190 x 317 mm	80 x 190 x 253 mm	80 x 190 x 330 mm	80 x 190 x 330 mm
	3,8 kg	3,8 kg	4,8 kg	4 kg	4,9 kg	4,9 kg
	IP 42	IP 42	IP 42	IP 42	IP 42	IP 42
	analog	RS 232 / analog	RS 232 / analog	RS 232 / analog	RS 232 / analog	RS 232 / analog
	–	trend	trend	trend	trend	trend
	2572200	2600000	3460000	3330000	2850000	2850700

IKA® Mixing
 Mechanical overhead stirrers



IKA® Mixing
 Horizontal shakers



	RW 20 digital	RW 28 basic	RW 28 D	RW 47 D
Technical data				
Stirring quantity (H ₂ O)	20 l	80 l	80 l	200 l
Max. viscosity	10.000 mPas	50.000 mPas	50.000 mPas	100.000 mPas
Motor rating input / output	70 / 35 W	220 / 90 W	270 / 180 W	513 / 370 W
Output at stirring shaft	26 W	90 W	135 W	300 W
Max. ON time	100 %	100 %	100 %	100 %
Max. torque at chuck (per 100 rpm)	150 Ncm	900 Ncm	911 Ncm	3.000 Ncm
Speed range I (per 50 Hz)	60 – 500 rpm	60 – 400 rpm	40 – 370 rpm	57 – 275 rpm
Speed range II (per 50 Hz)	240 – 2.000 rpm	240 – 1.400 rpm	120 – 1.400 rpm	275 – 1.300 rpm
Speed display	digital	scale	scale	scale
Chuck range	0,5 – 10 mm	1 – 10 mm	1 – 10 mm	3 – 16 mm
Diameter / length of extension arm	13 mm / 160 mm	16 mm / 145 mm	16 mm / 160 mm	–
General data				
Dimensions (W x D x H)	88 x 212 x 294 mm	123 x 252 x 364 mm	140 x 279 x 468 mm	145 x 340 x 445 mm
Weight	3,1 kg	7,4 kg	9,3 kg	15 kg
Protection class acc. to DIN EN 60529	IP 20	IP 42	IP 54	IP 54
Ident. No.	3593000	2760000	3297000	1602000

	HS 260 basic	HS 260 control	HS 501 digital
Technical data			
Shaking movement	reciprocating	reciprocating	reciprocating
Orbital diameter	20 mm	20 mm	30 mm
Max. shaking weight (with attachment)	7,5 kg	7,5 kg	15 kg
Motor rating input / output	45 / 10 W	45 / 10 W	70 / 19 W
Permissible ON time	100 %	100 %	100 %
Speed range	20 – 300 rpm	10 – 300 rpm	0 – 300 rpm
Speed display	LED line	digital	digital
Timer	∞ / 5 – 50 min	∞ / 9 h 59 min	∞ / 0 – 56 min
General data			
Dimensions (W x D x H)	360 x 420 x 100 mm	360 x 420 x 100 mm	505 x 585 x 120 mm
Weight	8,5 kg	8,8 kg	26 kg
Permissible ambient temperature	5 – 50 °C	5 – 50 °C	5 – 50 °C
Protection class acc. to DIN EN 60529	IP 21	IP 21	IP 21
Interface	–	RS 232 / analog	–
Ident. No.	3066600	3066700	2527000

IKA® Mixing
 Orbital shakers



IKA® Mixing
 Orbital shakers



	lab dancer	VORTEX Genius 3	MS 3 basic	MS 3 digital	VXR basic Vibrax®
Technical data					
Shaking movement	orbital	orbital	orbital	orbital	orbital
Orbital diameter	4,5 mm	4 mm	4,5 mm	4,5 mm	4 mm
Max. shaking weight (with attachment)	0,1 kg	0,4 kg	0,5 kg	0,5 kg	2 kg
Motor rating input / output	1,2 / 0,8 W	58 / 10 W	10 / 8 W	10 / 8 W	35 / 13,2 W
Permissible ON time	100 %	100 %	100 %	100 %	100 %
Speed range	2.800 rpm	500 – 2.500 rpm	0 – 3.000 rpm	0 – 3.000 rpm	0 – 2.200 rpm
Speed display	–	scale (0 - 6)	scale	scale	scale
Timer	–	–	–	1 s - 999 min	–
General data					
Dimensions (W x D x H)	Ø 100 x 70 mm	127 x 149 x 136 mm	148 x 205 x 63 mm	148 x 205 x 63 mm	157 x 247 x 130 mm
Weight	0,55 kg	4,5 kg	2,9 kg	2,9 kg	6,1 kg
Permissible ambient temperature	5 – 40 °C	5 – 40 °C	5 – 40 °C	5 – 40 °C	5 – 40 °C
Protection class acc. to DIN EN 60529	IP 40	IP 21	IP 21	IP 21	IP 21
Interface	–	–	–	–	–
Ident. No.	3365000	3340000	3617000	3319000	2819000

	MTS 2/4 digital	KS 130 basic*	KS 130 control	KS 260 basic	KS 260 control*	KS 501 digital	KS 4000 i control
Shaking movement	orbital	orbital	orbital	orbital	orbital	orbital	orbital
Orbital diameter	3 mm	4 mm	4 mm	10 mm	10 mm	30 mm	20 mm
2 o. 4 microtiter plates	–	2 kg	2 kg	7,5 kg	7,5 kg	15 kg	20 kg
Motor rating input / output	35 / 13,2 W	45 / 10 W	45 / 10 W	45 / 10 W	45 / 10 W	70 / 19 W	82 / 24 W
Permissible ON time	100 %	100 %	100 %	100 %	100 %	100 %	100 %
Speed range	0 – 1.100 rpm	80 – 800 rpm	80 – 800 rpm	20 – 500 rpm	10 – 500 rpm	0 – 300 rpm	10 – 500 rpm
Speed display	scale	LED line	digital	LED line	scale	digital	digital
Timer	∞ / 1 – 99 min	∞ / 5 – 50 min	∞ / 0 – 9 h 59 min	∞ / 5 – 50 min	∞ / 9 h 59 min	∞ / 0 – 56 min	∞ / 0 – 999 h
Dimensions (W x D x H)	185 x 320 x 105 mm	270 x 316 x 98 mm	270 x 316 x 98 mm	360 x 420 x 98 mm	360 x 420 x 98 mm	505 x 585 x 120 mm	580 x 750 x 525 mm
Weight	2,7 kg	8,8 kg	9,8 kg	8,5 kg	8,8 kg	26 kg	55 kg
Permissible ambient temperature	5 – 40 °C	5 – 50 °C	5 – 50 °C	5 – 50 °C	5 – 50 °C	5 – 50 °C	15 – 32 °C
Protection class acc. to DIN EN 60529	IP 21	IP 21	IP 21	IP 21	IP 21	IP 21	IP 30
Interface	–	–	RS 232 / analog	–	RS 232 / analog	–	RS 232
Ident. No.	3208000	2980000	2980100	2980200	2980300	2526400	3510000

* without image

IKA® Crushing

Universal disposable disperser system



ULTRA-TURRAX® Tube Drive



ULTRA-TURRAX® Workstation

Included with delivery:
 1 x ULTRA-TURRAX® Tube Drive,
 2 x ST-20 Tube with stirring device,
 2 x DT-20 Tube with rotor-stator element,
 2 x BMT-20 G / S Tube for grinding with glass balls (G)
 or with stainless steel balls (S), 1 x removal hook
 for removal the rotor-stator unit, power supply

new

- New: γ-sterilised tubes
- New: Tubes with pierceable membrane in the lid
- New: 20 ml and 50 ml tubes

For more information please visit: www.ika.net

	ULTRA-TURRAX® Tube Drive
Technical data	
Rating input / output	20 / 17 W
Speed range, infinitely adjustable	300 – 6.000 rpm
Timer	1 – 59 s (300 – 6.000 rpm) 1 – 29 min (300 – 4.000 rpm)
Display timer	digital
General data	
Dimensions (W x D x H)	100 x 160 x 40 mm
Weight	0,75 kg
Protection class acc. to DIN EN 60529	IP 20
Ident. No.	3646000



ST-20 Tube with stirring device



DT-20 Tube with rotor-stator element



BMT-20 G / S Tube for grinding glass balls (G) or with stainless steel balls (S)

	ULTRA-TURRAX® Workstation	ST-20	DT-20	BMT-20 S	BMT-20 G
Ident. No.	3645000	3703000	3703100	3703200	3703300



T 10 basic

T 18 basic

T 25 digital

T 50 basic

T 65 D

	T 10 basic ULTRA-TURRAX®	T 18 basic ULTRA-TURRAX®	T 25 digital ULTRA-TURRAX®	T 50 basic ULTRA-TURRAX®	T 65 D ULTRA-TURRAX®
Technical data					
Motor rating input / output	125 / 75 W	500 / 300 W	500 / 300 W	1.100 / 700 W	1.800 / 1.500 W
Volume range (H ₂ O)	0,5 – 100 ml	1 – 1.500 ml	1 – 2.000 ml	0,25 – 30 l	2 – 50 l
Speed adjustment	stepless	stepless	stepless	stepless	–
Speed range	8.000 – 30.000 rpm	3.500 – 24.000 rpm	3.400 – 24.000 rpm	500 – 10.000 rpm	fixed 7.200 rpm
Speed display	scale	scale	digital	scale	–
Noise without dispersing element	65 dB (A)	73 dB (A)	73 dB (A)	72 dB (A)	75 dB (A)
Overload protection	yes	yes	yes	yes	yes
General data					
Dimensions (W x D x H)	46 x 57 x 201 mm	65 x 80 x 240 mm	65 x 80 x 240 mm	125 x 120 x 367 mm	190 x 580 x 380 mm
Weight	0,4 kg	1,6 kg	1,6 kg	6 kg	28 kg
Permissible ambient temperature	5 – 40 °C	5 – 40 °C	5 – 40 °C	5 – 40 °C	5 – 40 °C
Permissible relative humidity	80 %	80 %	80 %	80 %	80 %
Protection class acc. to DIN EN 60529	IP 30	IP 20	IP 20	IP 20	IP 54
Ident. No.	3420000	3561000	3565000	3783500	1602800

IKA® Crushing
 Mills / Grinders



| A 11 basic Analytical mill | M 20 Universal mill | MF 10 basic Microfine grinder drive + MF 10.1 Cutting-grinding head | MF 10 basic Microfine grinder drive + MF 10.2 Impact grinding head

	A 11 basic	M 20	MF 10 basic + MF 10.1	MF 10 basic + MF 10.2
Technical data				
Motor rating input / output	160 / 100 W	440 / 225 W	1.000 / 500 W	1.000 / 500 W
Speed range	fixed 28.000 rpm	fixed 20.000 rpm	3.000 – 6.500 rpm	3.000 – 6.500 rpm
Useful volume	80 ml	250 ml	max. 5 kg / h	max. 5 kg / h
Duty cycle ON / OFF	1 min / 10 min	7 min / 10 min	120 min / 30 min	120 min / 30 min
Overload protection	yes	current limitation	yes	yes
Circumferential speed	53 m/s	72 m/s	22,5 m/s	31,4 m/s
Max. granularity of task	10 mm	5 - 7 mm	15 mm	10 mm
Material grinding chamber	stainless steel (AISI 316)	stainless steel (AISI 304)	stainless steel (AISI 304)	stainless steel (AISI 304)
Material cover	-	stainless steel (AISI 304)	stainless steel (AISI 304)	stainless steel (AISI 304)
General data				
Dimensions (W x D x H)	85 x 85 x 240 mm	170 x 170 x 350 mm	320 x 300 x 560 mm	320 x 300 x 450 mm
Weight	1,5 kg	6,6 kg	9,7 kg + 0,8 kg	9,7 kg + 1,3 kg
Permissible ambient temperature	5 – 40 °C	5 – 40 °C	5 – 40 °C	5 – 40 °C
Permissible relative humidity	80 %	80 %	80 %	80 %
Protection class acc. to DIN EN 60529	IP 43	IP 21	IP 22	IP 22
Ident. No.	2900000	1603600	2836000 + 2870900	2836000 + 2871000

IKA® Accessories
 Electronic contact thermometers



| ETS-D5 | ETS-D6
 1 incl. BNC bushing
 2 incl. pH measurement.

	ETS-D5	ETS-D6
Temperature		
Temperature measuring range	- 50 – 450 °C	- 50 – 450 °C
Resolution	0,1 K	0,01 K
Measuring accuracy	± 0,2 K + Sensor tolerance PT 1000 DIN IEC 751 class A	± 0,05 K + Sensor tolerance PT 1000 DIN IEC 751 class A
Setting accuracy	0,1 K	0,1 K
Control deviation	± 0,5 K	± 0,2 K
pH measurement		
Measuring range	-	0 - 14 pH
Accuracy	-	± 0,1 pH
Resolution	-	± 0,01 pH
pH connection	-	BNC bushing
General data		
Supply voltage	8 – 16 VDC	8 – 16 VDC
Power consumption	10 mA (per 9 V)	15 mA (per 9 V)
Max. ON time	100 %	100 %
Plug	6 pin DIN 45322	6 pin DIN 45322
Connection	DIN 12878 class 2	DIN 12878 class 2
Dimensions (W x D x H)	82 x 22 x 83 mm (without sensor)	96 x 45 x 98 mm (without sensor)
Permissible ambient temperature	0 – 60 °C	0 – 60 °C
Permissible relative humidity	80 %	80 %
Protection class acc. to DIN EN 60529	IP 54	IP 54
Ident. No.	3378000	3378100

IKA® »fun at work«

COLOR SQUID

Technical data p. 6

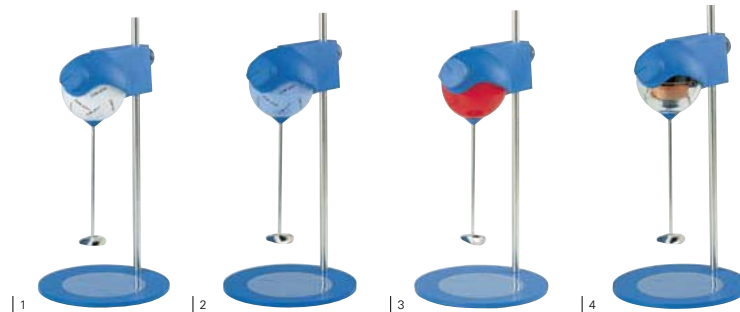
- | Ident. No. | Motif |
|------------|-----------------------|
| 1 | 2669917 Number one |
| 2 | 2669936 Mighty Mouse |
| 3 | 2669922 Wildcat |
| 4 | 2669913 Zip |
| 5 | 2669910 Harry's notes |
| 6 | 3576600 bighead |
| 7 | 3576900 balloon |
| 8 | 3576000 curly |
| 9 | 3576300 sunny |



RW 11 basic „Lab egg“

Technical data p. 8

- | Ident. No. | Motif |
|------------|---------------------|
| 1 | 2830001 off-white |
| 2 | 2830004 creamy blue |
| 2 | 2830005 salmon pink |
| 4 | 2830000 transparent |



IKA® »fun at work«

BIG SQUID

Technical data p. 6

- | Ident. No. | Motif |
|------------|--------------------|
| 1 | 3050009 White |
| 2 | 3050002 Froggy |
| 3 | 3050001 Star |
| 4 | 3050005 IKAmaëleon |
| 5 | 3050004 Ocean |
| 6 | 3573000 pineapple |
| 7 | 3573200 strawberry |
| 8 | 3573600 orange |
| 9 | 3573400 kiwi |



lab disc

Technical data p. 6

- | Ident. No. | Motif |
|------------|-----------------------|
| 1 | 3277700 white |
| 2 | 3362300 Sunny Side Up |
| 3 | 3578000 orange |
| 4 | 3578600 brown |
| 5 | 3578200 green |
| 6 | 3578400 pink |